

PICTURE THAT CONSULTANTS

WOMEN'S HISTORY MONTH ART SALES CATALOG



Art Curator: Picture That Consultants – www.picturethatconsultants.com

TABLE OF CONTENTS

Artist Bios	<u>3</u>
Tapestry	<u>4</u>
Mixed Media	<u>5</u>
Paintings	<u>7</u>
Photography	<u>18</u>
Contact Us	<u>20</u>

Welcome to the World of Picture That Art Gallery

We are excited to offer diverse artwork selections by emerging women artists in celebration of Women's History Month.

To place an order, please click on the order form below. Note that prices do not include shipping and handling. Contact us if you have any questions or require different sizes.

ORDER FORM

Interested in art commissions?

Contact us picturethatconsultants@gmail.com or (203) 977-8203

As always, we appreciate your continued support. Your purchase supports our emerging women artists and a portion of the proceeds are donated to the PT Foundation Scholarship Fund.

Art on the cover page is from the 65th session of the Commission on the Status of Women, a functional commission of the United Nations Economic and Social Council and a global policy-making body dedicated exclusively to promoting gender equality and the empowerment of women.

ARTIST BIOS

Barbara Mason

Texas artist communicating with the world through the expression of art. She is published and collected by hospitals, businesses, public art programs and private patrons. Her work can be found at very prestigious museums. Most recently, she was recognized by Pastel Journal Magazine.

Deanna Lee

New York artist interpreting everyday traces of transformation in natural systems and the built environment. The rhythms of her hand-drawn lines stem from various influences: organic forms of flora and fauna; natural systems such as waves and wind currents; geological strata; topographical maps; and sound.

Karen Fitzgerald

New York artist depicting energies within our physical world. They are interconnected and she makes them visible through references to phenomena in the natural world. Oil paint is thinned until fluid, producing a luminous, subtle, surface.

Kimberly Saunders

Maryland mixed media artist with very thoughtful attention to detail and fascination with color and texture. She brings intricate designs to life using glass, semi-precious stone, tile, and recycled materials. Kimberly's collection includes wall art as well as functional pieces.

Lee Palombo

For Lee, photography captures those “evaporative moments”. A picture tells a story about someone, something, or some place – a moment in time that you will never get back, but can capture with your camera.

Lilya Pavlovic Dear

New York artist inspired by ecological themes. Elements from nature such as water and various organic forms are prevalent in her paintings. She expresses herself by going beyond the physical image and attempting to catch the essence of things.

Sherry Shine

Quilting has captured and satisfied the curiosity of this fiber artist. She combines traditional techniques with the history of quilting to tell elaborate and timeless stories through the form of art quilting.

Soonae Tark

Soonae Tark exhibits her reductive, colorful geometric work in galleries, museums, and public spaces. Her public two-story mural, "Love You", is a joyful celebration of color and delight was featured on the cover of Mayor Bloomberg's New York City's Mayor's Management Report.

TAPESTRY BY SHERRI SHINE

#1, A Time to Reflect
34" x 49" framed
Quilt; \$12,000



MIXED MEDIA BY KIMBERLY SAUNDERS



#2, Everyday People I
12" x 12"

*Stained glass, dinnerware, glass
tile, recycled materials on backer
board; Sold*



#3, Unconditional Love
10" x 20"

*Stained glass, dinnerware, vintage
African dice, glass tile on backer
board; Sold*



#4, Women Belong – RBG,
10" x 13"

*Stained glass, glass tile, hematite
beads on glass with black frame;
Sold*

MIXED MEDIA BY KIMBERLY SAUNDERS (CONTINUED)



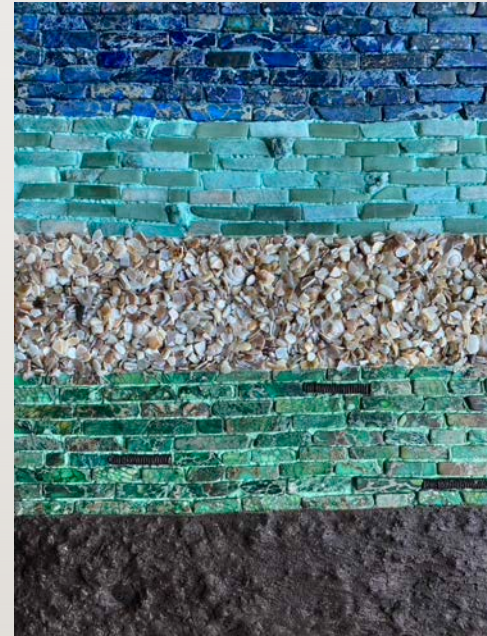
#5, Everyday People II
12" x 12"

Stained glass, dinnerware, glass tile, recycled materials on backer board; \$500



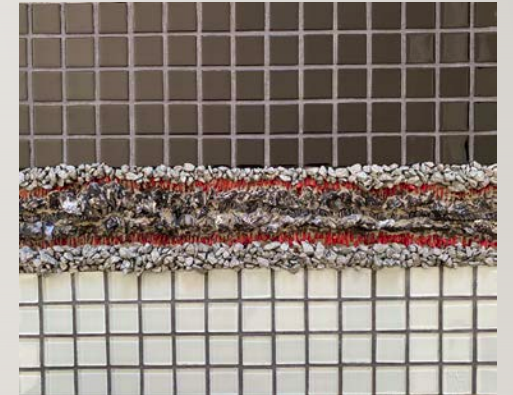
#6, First Lady
18" x 24"

Stained glass, ceramic and glass tile on backer board; \$1600



#7, Land and Sea
16" x 20"

Stone, crushed seashells, wood on backer board; \$800



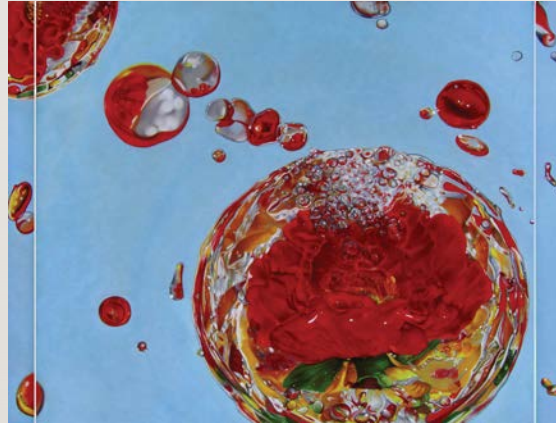
#8, Charred Ruins
18" x 24"

Stone, coral, glass tile on backer board; \$450

PAINTINGS BY BARBARA MASON



#9, Tulips
22" x 28"
Pastel on paper; \$1,500



#10, Submerged
35" x 45"
Pastel on paper; \$5,000



#11, Roses
30" x 24"
Pastel on paper; \$2,000



#12, Transparent Love
21" x 34"
Pastel on paper; \$3,500

PAINTINGS BY BARBARA MASON (CONTINUED)



#13, Kaleidoscope
21" x 25"
Pastel on paper; \$800



#14, African Gerber Daisies
44" x 36"
Pastel on paper; \$5,000



#15, Southern Pride
45" x 35"
Pastel on paper; \$5,000



#16, Brown Eyed Susan
22" x 28"
Pastel on paper; \$2,000

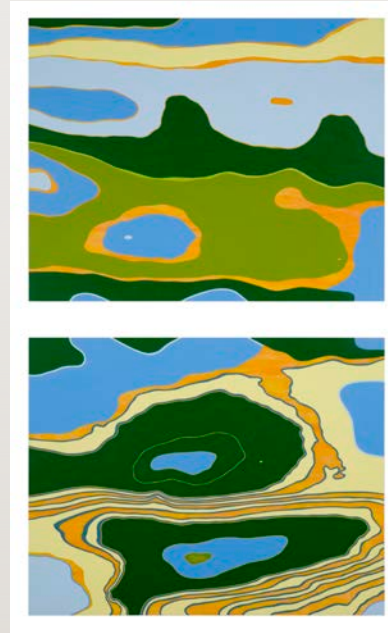
PAINTINGS BY DEANNA LEE



#17, AHSP:CRNT
36" x 18"
Ink & Acrylic on Panel; \$3800



#18, AWGP:MBRHD
24" x 20"
Gouache & Acrylic on Wood; \$3250



#19, AWGP: DPTCHN
2 Parts, 24" x 30" ea.
Acrylic on Wood; \$7000



#20, Teal Current
17" x 18"
Acrylic on MDF panel; \$2000

PAINTINGS BY DEANNA LEE (CONTINUED)



#21, Updraft
17" x 18"
Acrylic on MDF panel; \$2000



#22, Red Orb
17" x 35"
Acrylic on MDF panel; \$3800



#23 Water Folly
18" x 17"
Acrylic on MDF panel; \$2000

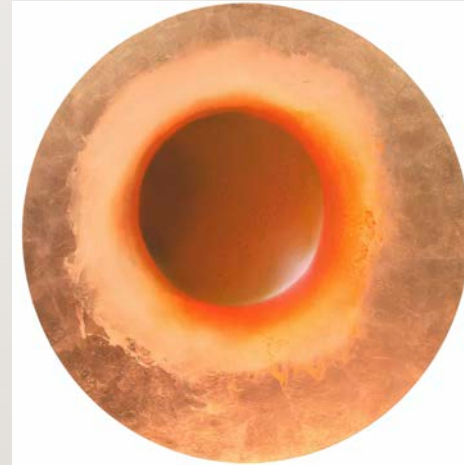
PAINTINGS BY KAREN FITZGERALD



**#24, The Moon is Dreaming of
Flowers**
24" diameter x .5" deep
Oil with 23k gold on panel; \$5000



#25, Blue Moon
36" diameter x .5" deep
oil with 12k gold on panel; \$7000



#26, Darkened Moon
36" diameter x .5" deep
Oil with copper on panel; \$7,000



#27, Dahlia
40" diameter x .5" deep
Oil with 18k gold on panel; \$10,500

PAINTINGS BY KAREN FITZGERALD (CONTINUED)



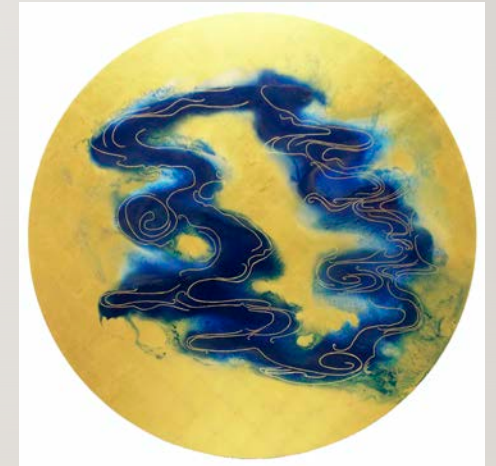
#28, Boat 2
40" diameter x .5" deep
Oil with aluminum, silver, 12k gold on panel; \$10,500



#29, Pearl
60" diameter x 1.5" deep
Oil on canvas; \$12,200



#30, Burning Bush
60" diameter x 1.5" deep
Oil on canvas; \$12,200



#31, Ancient Wind
48" diameter x .5" deep
oil with 23k gold on panel; \$13,500

PAINTINGS BY LILYA PAVLOVIC DEAR



#32, Victoria Falls
51" x 38"
Acrylic on Canvas; \$9600

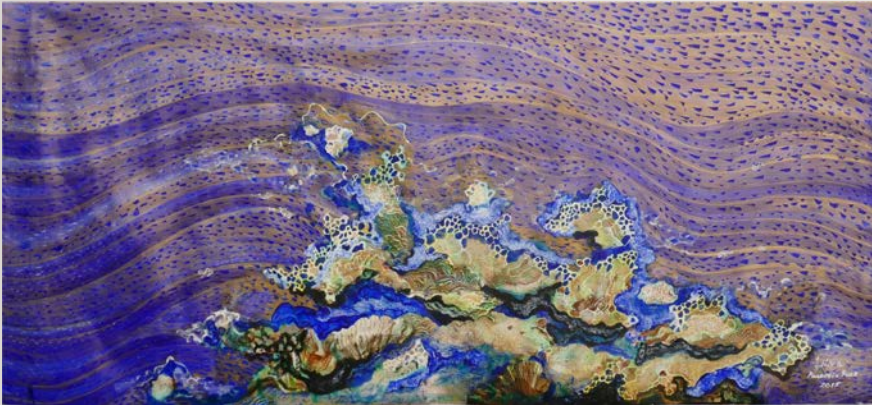


#33, Sea and Corals
28³/₄" x 36¹/₄"
Acrylic on canvas; \$4,800



#34, Sea Foam
28³/₄" x 36¹/₄"
Acrylic on Canvas; \$4800

PAINTINGS BY LILYA PAVLOVIC DEAR (CONTINUED)



#35, Green Reef
28³/₄" x 36¹/₄"
Acrylic on Canvas; \$14,400



#36, Triptych
59" x 138"
Acrylic on Canvas; \$28,000

PAINTINGS BY SOONAE TARK



#37, Crush 6-21
18" x 24"

Acrylic, cut paper on paper; \$2,800



#38, Crush 7-21
18" x 24"

Acrylic, cut paper on paper; \$2,800



#39, Crush 8-21
18" x 24"

Acrylic, cut paper on paper; \$2,800

PAINTINGS BY SOONAE TARK (CONTINUED)



#40, Crush 9-20
18" x 24"
Acrylic, cut paper on paper; \$2,800



#41, Crush 11-21
24" x 18"
*Acrylic, cut paper on paper;
\$2,800*



#42, Crush 12-21
24" x 18"
*Acrylic, cut paper on paper;
\$2,800*



#43, Crush 10-20
18" x 24"
Acrylic, cut paper on paper; \$2,800

PAINTINGS BY SOONAE TARK (CONTINUED)



#44, Standing Tall
32" x 32"
Acrylic on canvas; \$9500



#45, Lavender
34" x 34"
Acrylic on canvas; \$10,000



#46, Hot Pink
32" x 32"
Acrylic on canvas; \$9,500

PHOTOGRAPHS BY LEE PALOMBO



#47, Sunset OS Beach
24" x 36"
\$700



#48, Sunset Niantic Bay
24" x 36"
\$700



#49, Sunset Pequot
24" x 36"
\$700

PHOTOGRAPHS BY LEE PALOMBO (CONTINUED)



#50, Sunset CT River
24" x 36"
\$700



#51, NL LH Sunset Clouds
24" x 36"
\$700

CONTACT US

Northeast Region

Soundview Plaza
1266 East Main Street, Suite 700R
Stamford, CT 06902



Southeast Region

TWELVE Centennial Park
400 W Peachtree St. NW, Suite 3006
Atlanta, GA 30308



Picture That, LLC

Phone: 203-977-8203

General Inquiries

fineart@picture-that.com

www.picturethatconsultants.com